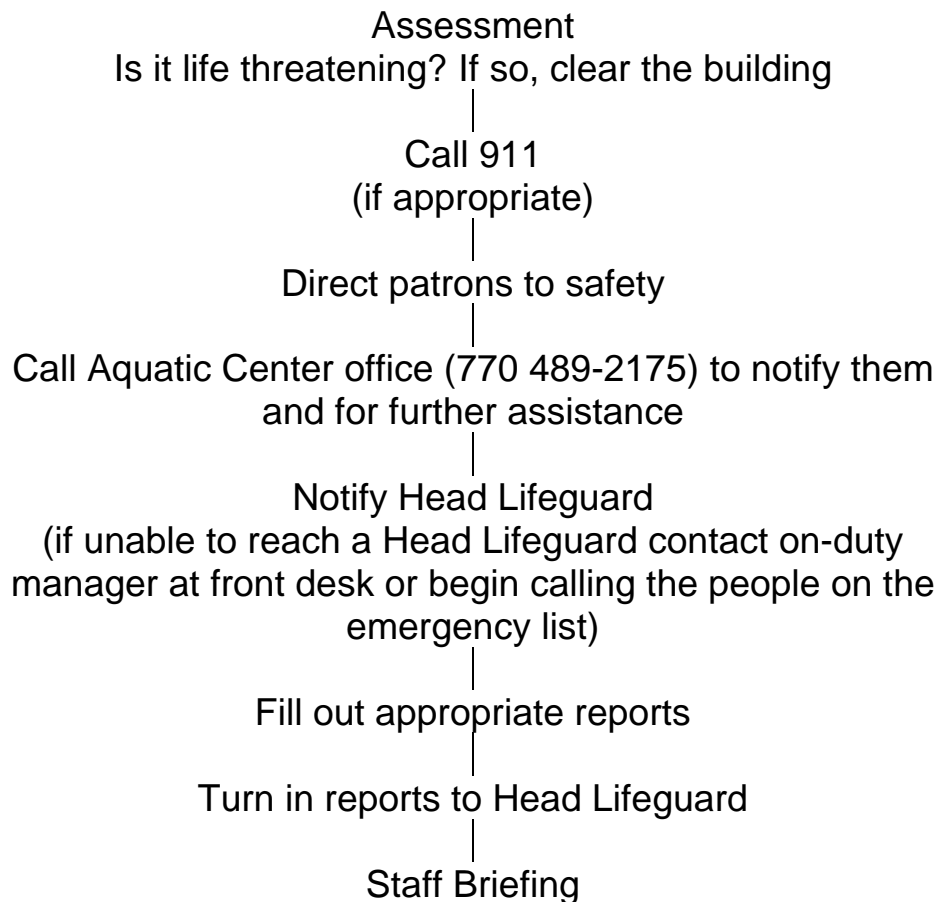


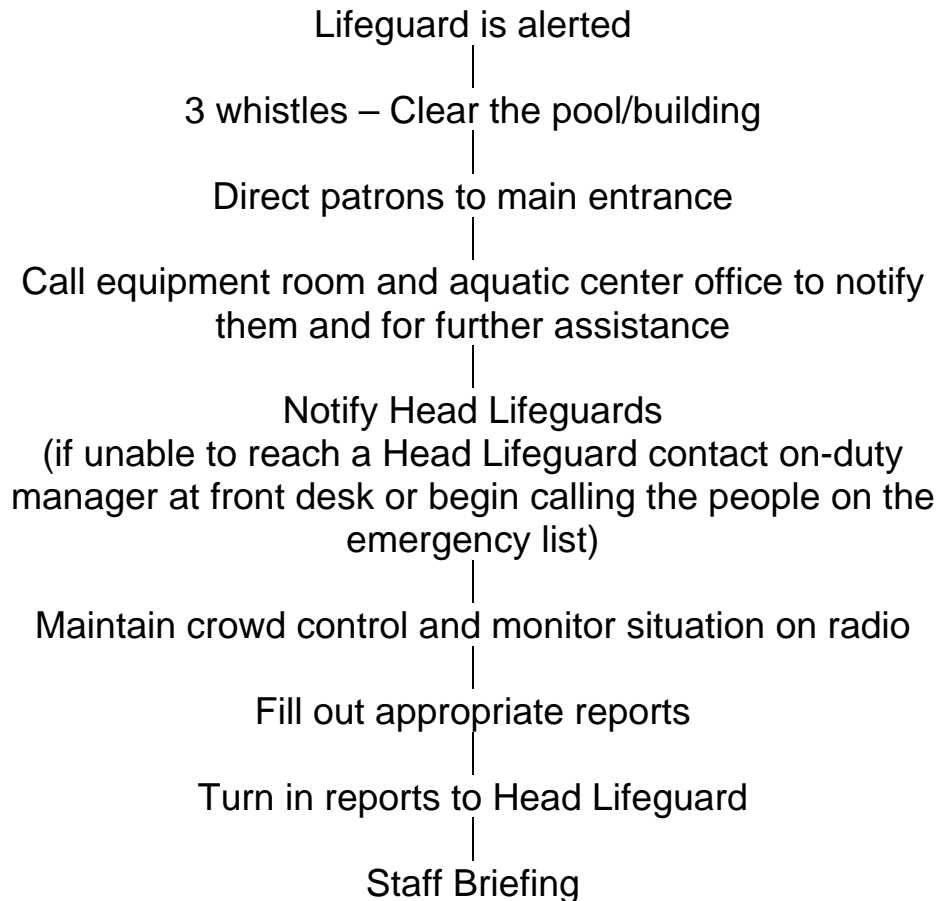
Douglas County Stingrays- Safety Action Plan

FACILITY EMERGENCY



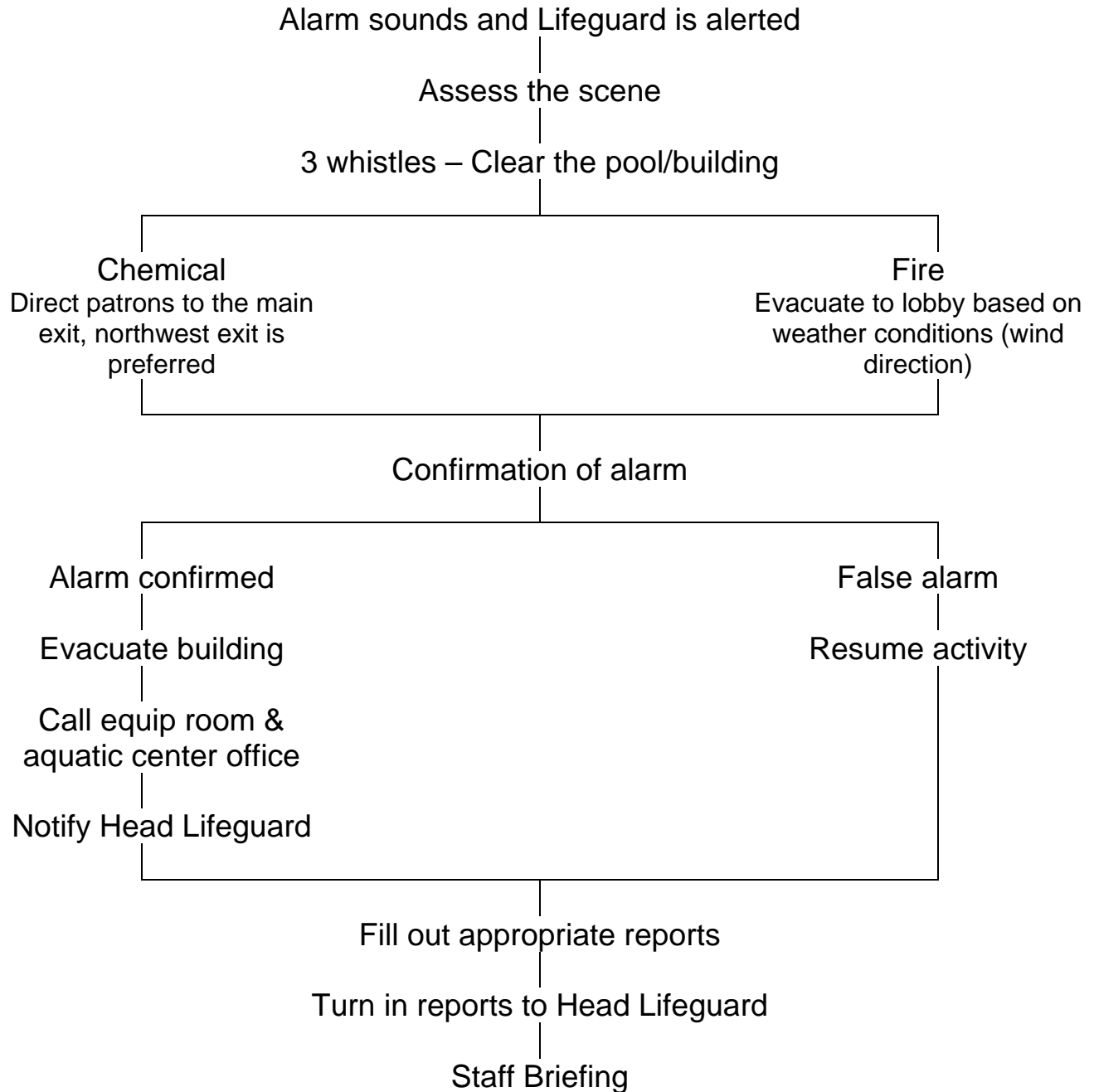
Douglas County Stingrays- Safety Action Plan

WEATHER EMERGENCY

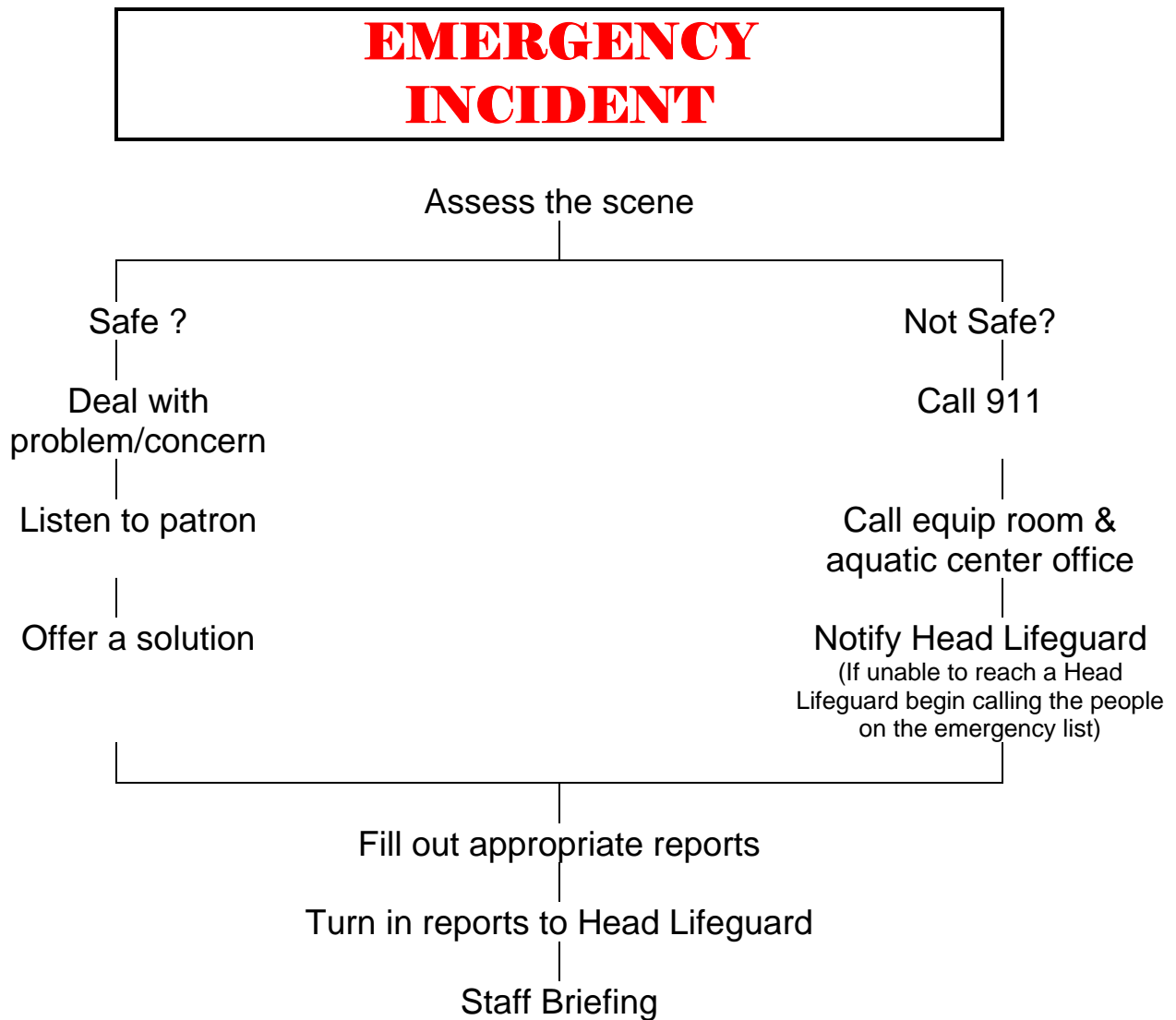


Douglas County Stingrays- Safety Action Plan

FIRE & CHEMICAL EMERGENCY

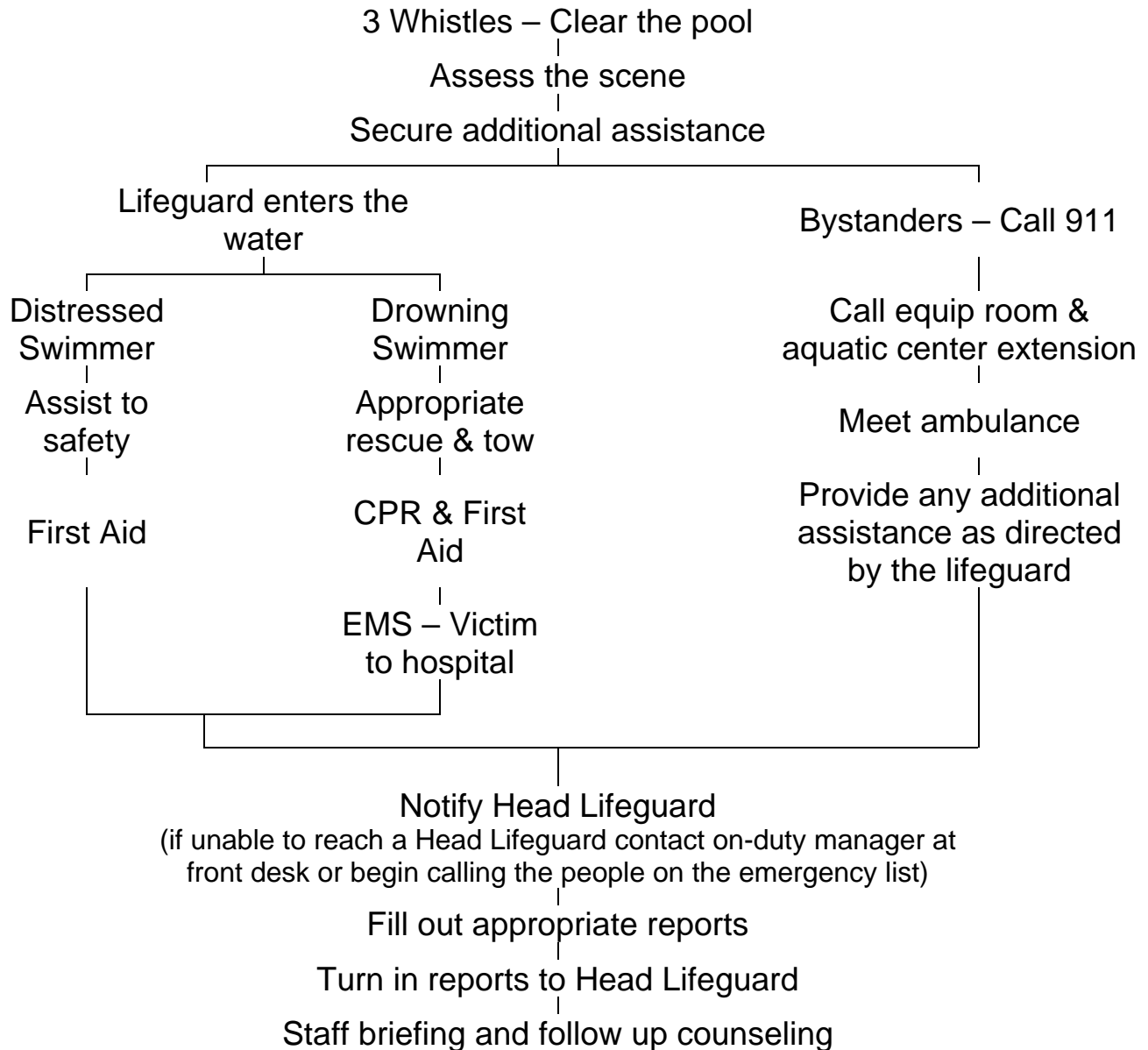


Douglas County Stingrays- Safety Action Plan



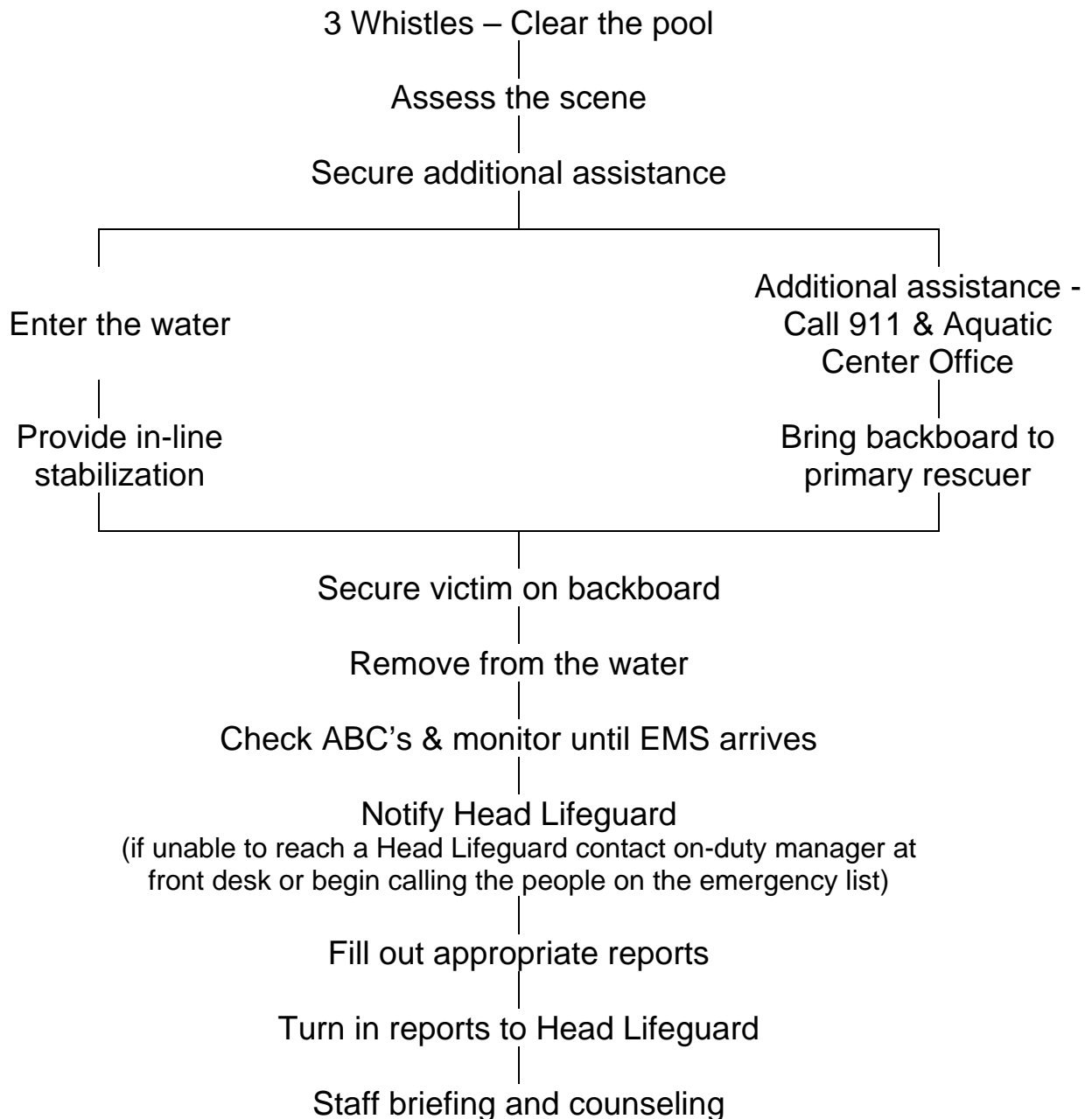
Douglas County Stingrays- Safety Action Plan

DROWNING EMERGENCY



Douglas County Stingrays- Safety Action Plan

SPINAL MANAGEMENT



Douglas County Stingrays- Safety Action Plan

911 CALL

This sign provides directions to the appropriate emergency entrances. It also allows untrained persons provide the appropriate information to the 911 operator.

**THIS PHONE IS
FOR
EMERGENCY
USE ONLY**

1. DIAL "911".
2. Read the following message:

"AN AQUATIC EMERGENCY EXISTS AT THE BOUNDARY WATERS AQUATIC CENTER, 5000 HIGHWAY 92 PLEASE COME AT ONCE TO THE AQUATIC CENTER'S NORTHWEST DOOR (MAIN ENTRANCE AS YOU ENTER FROM HIGHWAY 92). IF POSSIBLE, SOMEONE WILL MEET YOU THERE AND DIRECT YOU TO THE POOL."

"THERE HAS APPARENTLY BEEN A _____ INJURY."

3. REMAIN ON THE PHONE WITH THE DISPATCHER UNTIL EMERGENCY PERSONNEL ARRIVE ON THE SCENE.

DO NOT HANG UP

PLEASE COMPLETE THE NECESSARY PAPERWORK AND NOTIFY THE AQUATIC DIRECTOR IMMEDIATELY AFTER THE EMERGENCY.

Douglas County Stingrays- Safety Action Plan

FACILITY EMERGENCY CONTACT LIST

Douglas County EMS 911
Sheriff's Department 770 942-2121
Well Star Douglas Hospital 770 949-1500

Boundary Waters Aquatic Center 770 489-2175
Mike Parker, Director 770-489-5021
Jim Ownes, Facilities Manager 770-318-1979

Arlette Whiddon (Stingrays Pres.) 678-386-4805
Lauren McGuire (liaison) 404-376-0900
Lindy Boatman (Coach) 404-580-3841