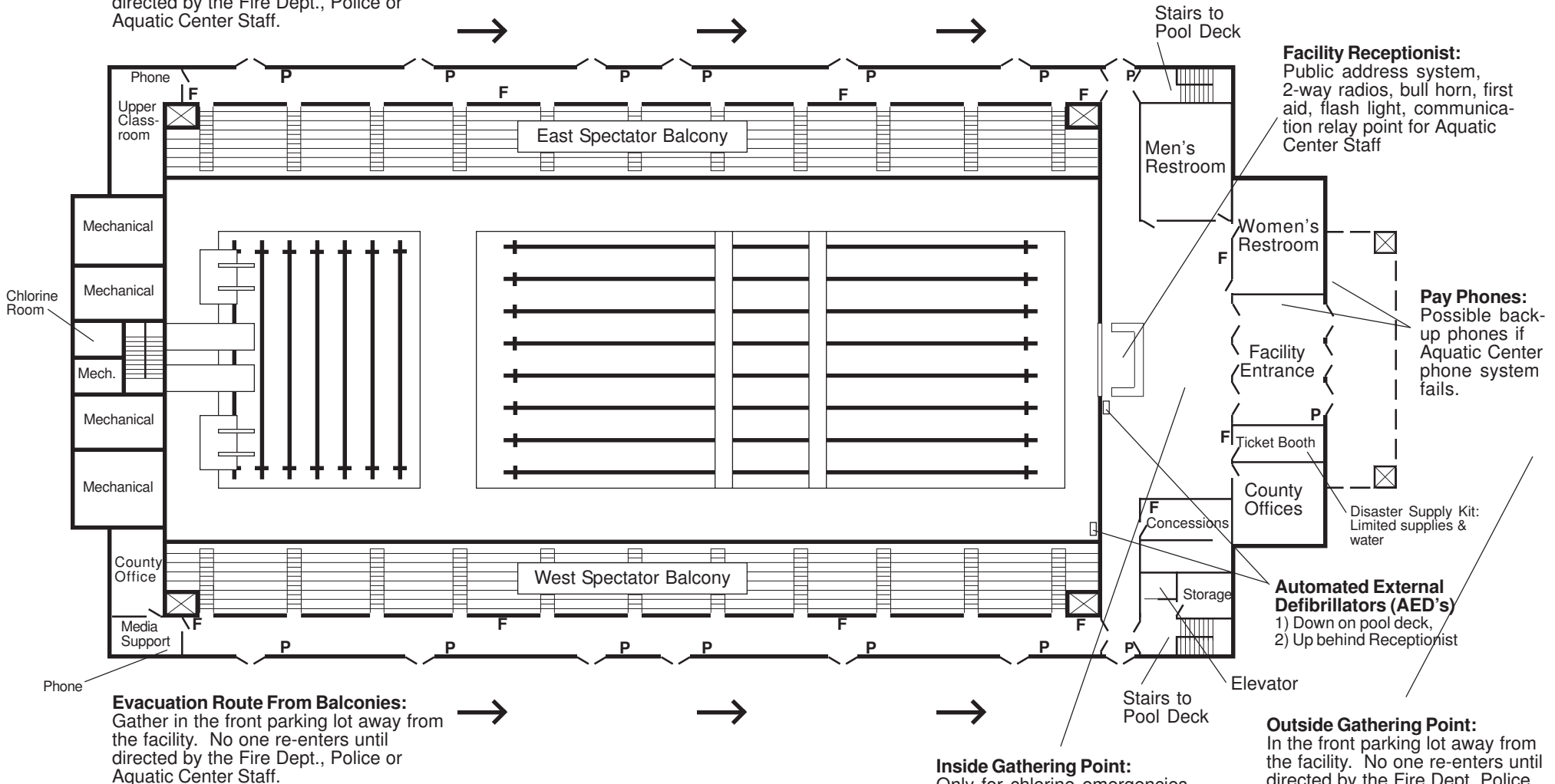


WEYERHAEUSER KING COUNTY AQUATIC CENTER

CONCOURSE LEVEL Emergency Equipment & Evacuation 2/25/15

Evacuation Route From Balconies:

Gather in the front parking lot away from the facility. No one re-enters until directed by the Fire Dept., Police or Aquatic Center Staff.



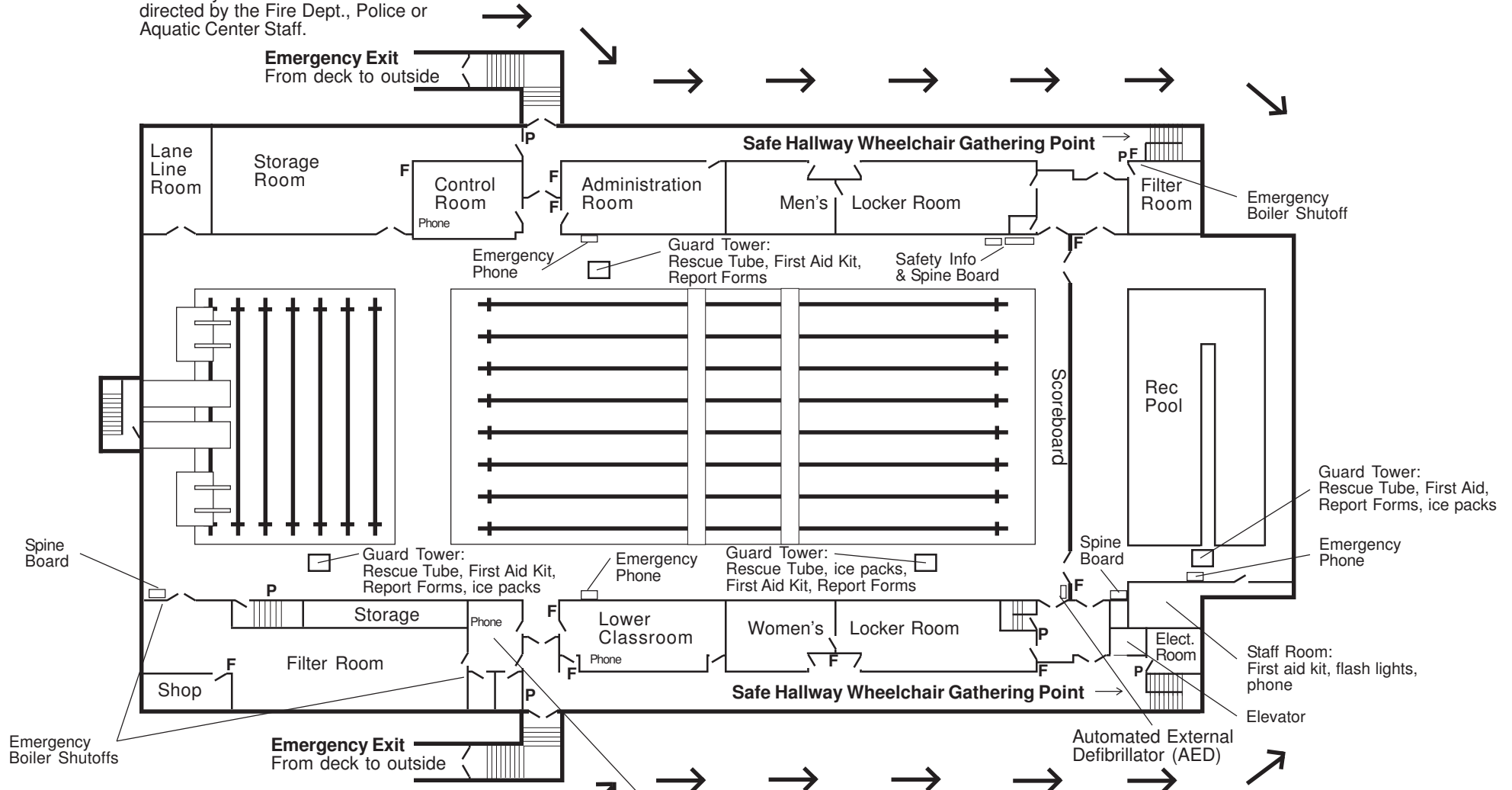
WEYERHAEUSER KING COUNTY AQUATIC CENTER

DECK LEVEL

Emergency Equipment & Evacuation 2/25/15

Evacuation Route From Deck:

Gather in the front parking lot away from the facility. No one re-enters until directed by the Fire Dept., Police or Aquatic Center Staff.



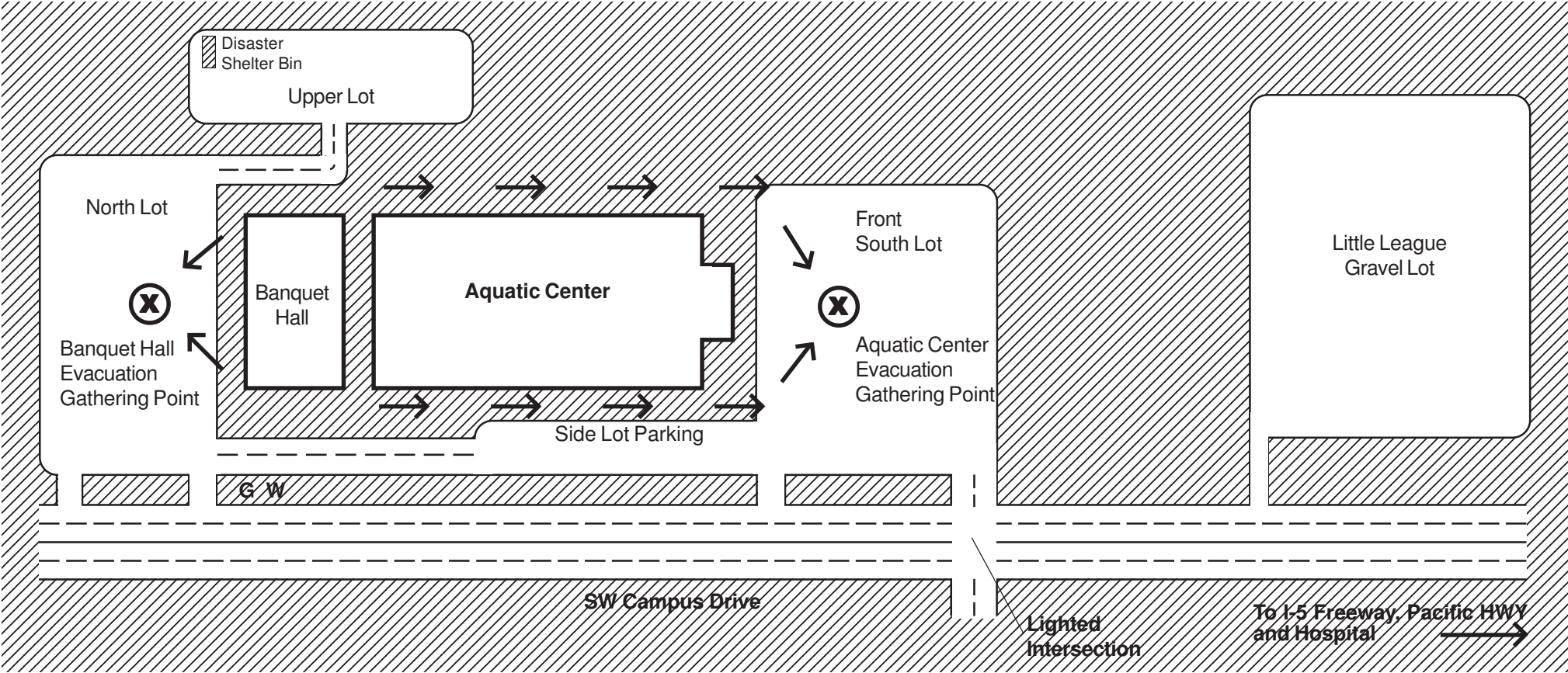
Evacuation Route From Deck:

Gather in the front parking lot away from the facility. No one re-enters until directed by the Fire Dept., Police or Aquatic Center Staff.

First Aid Room:
(see staff or use guard tower equipment)

F = Location of fire extinguishers
P = Fire Alarm Pull Stations
Emergency Number: **9-911**

Parking Lots



G = Emergency Gas Shut Off
 W = Emergency Water Shut Off

Weyerhaeuser King County Aquatic Center
 650 SW Campus Drive
 Federal Way, Washington 98023
 Seattle (206) 296-4444, Tacoma (253) 927-5173