

How to reset your password

Go to ashbourneswimclub.com

In the upper right of the website, click "Sign In"

Club

 SIGN IN

['S](#) [SWIM TEAM](#) [CONTACT US](#)

Click "Forgot password?"

Email

Password

Remember me

[Forgot password?](#)

Login

Enter the email address you believe is associated with your account, then click "Submit"

Reset Password



If you believe you have an account with the Team, please enter your email address associated with your account below and click Submit. An email with password reset instructions will be sent to that address.

Your Account Email Address:

Submit

If you enter an email address that is not associated with an account, you will see the following error message:

Reset Password



The email address that you entered cannot be found on the system.

Retry

Either try another email address or contact us at ashbourneswimclub@yahoo.com and we will work with you to get your account fixed.

If you are successful, you will see the following message:

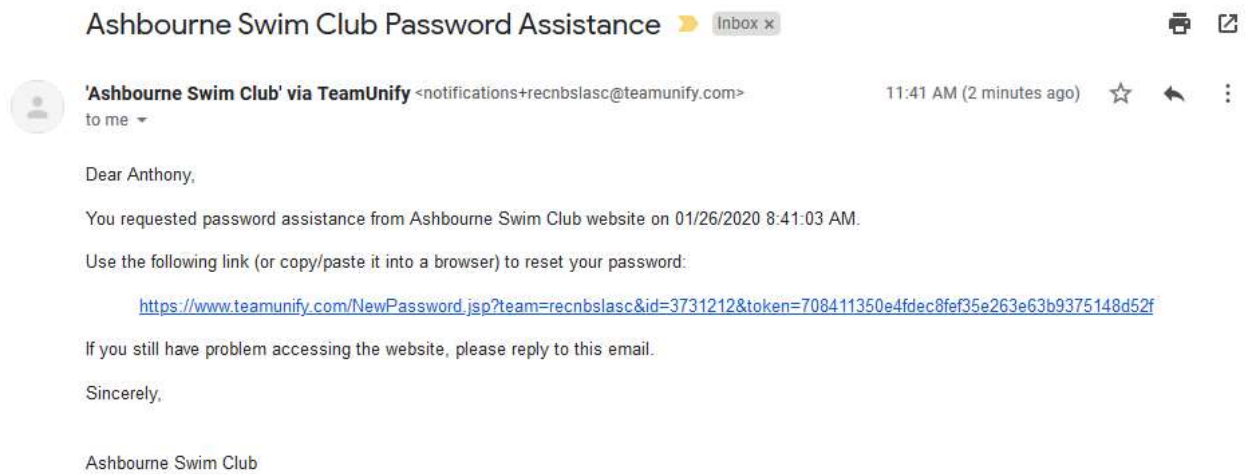
Reset Password



Password reset instructions have been successfully sent to your email address.

Done

Please check to see if you received an email. PLEASE ALSO CHECK YOUR SPAM FOLDER if the email doesn't appear in your primary email box. The email will look like this (except it won't say "Dear Anthony", unless your name is Anthony):



Click on the link in the email and it will bring you to this page:

Password: * Password must meet these requirements:

- ✓ Minimum 8 characters.
- ✓ Maximum of 60 characters.
- ✓ At least one digit OR one non-word character.
- ✓ At least one upper case alpha character.
- ✓ At least one lower case alpha character.

Re-type Password: *

Please note the password requirements. Once you enter and reenter a password that meets the requirements and re-enter it a green "Update Password" button will appear. Click it.

Password: *

Re-type Password: *

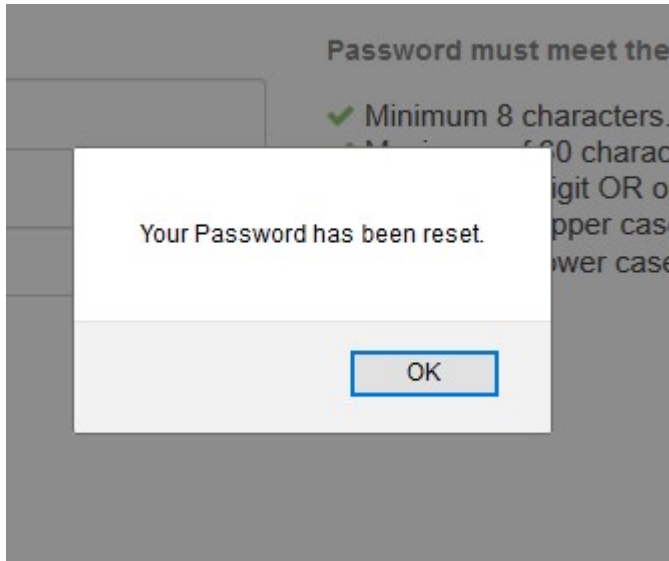
Cancel

Update Password

Password must meet these requirements:

- ✓ Minimum 8 characters.
- ✓ Maximum of 60 characters.
- ✓ At least one digit OR one non-word character.
- ✓ At least one upper case alpha character.
- ✓ At least one lower case alpha character.

If you did it correctly, you will see this:



If you have any issues, please email us at ashbourneswimclub@yahoo.com for assistance.