

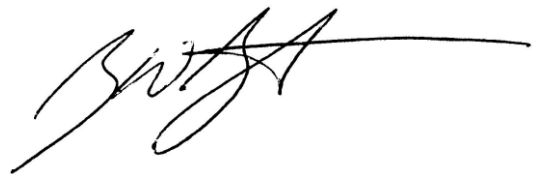
SRVA Rapids Swim Series Finale Intra-squad Meet November 20th – 22nd, 2020

Supplemental Document/Information

1. We are abiding by state of Virginia local protocols for Virginia Phase 3. There are no additional protocols in place in Chesterfield County.
2. Please see the plan for ingress and egress attached.
3. We are expecting 90-100 athletes in a session. Each session will have 90-120 parents. We will have 6-8 coaches. A maximum of 7 officials will be on deck. We will have 10-15 meet support staff (or volunteers).
 - a. Total number of people per session: 200-250
 - b. Total number of people with access inside the building will be a total of 75-112 per session on the competition pool deck where the capacity is 656 (coaches, athletes, officials, staff, timers).
 - c. Outside we could have up to 230 if every athlete and every parent chose to sit outside during the competition.
4. In applying for this sanction, SwimRVA agrees to comply and to enforce all health and safety mandates and guidelines of USA Swimming, Virginia Swimming, the Commonwealth of Virginia and Chesterfield County.

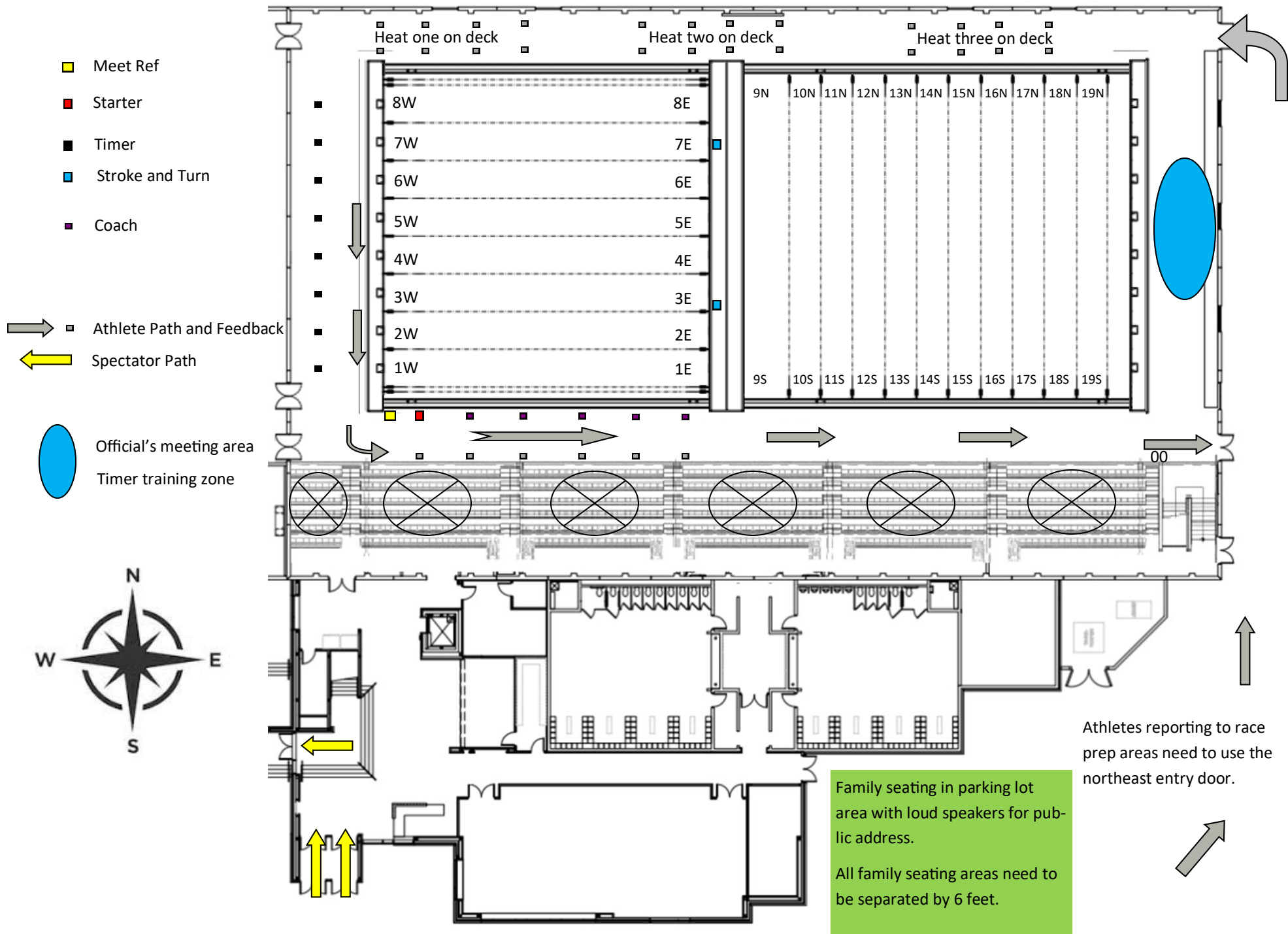


Adam Kennedy
Executive Director
SwimRVA



Brad Burton
Director of Operations
SwimRVA

SwimRVA Rapids Swim Series Finale | Indoor Deck Flow Map November 20th - 22nd, 2020

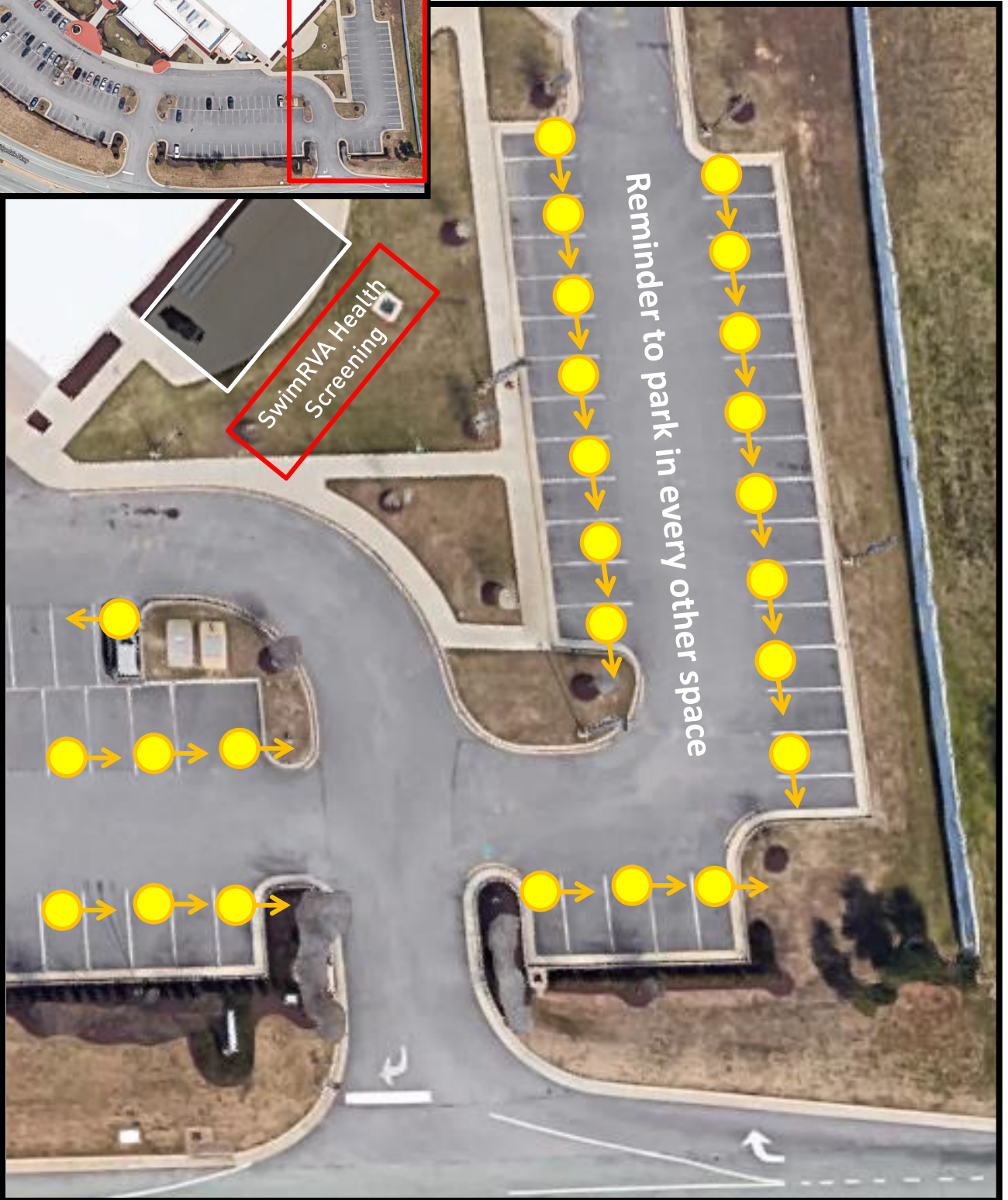




SwimRVA Rapids Swim Series Finale

November 20th – 22nd, 2020

Parking/Outdoor Seating Map





SwimRVA Rapids Swim Series Finale

November 20th – 22nd, 2020

Parking/Outdoor Seating Map



SwimRVA Health
Screening

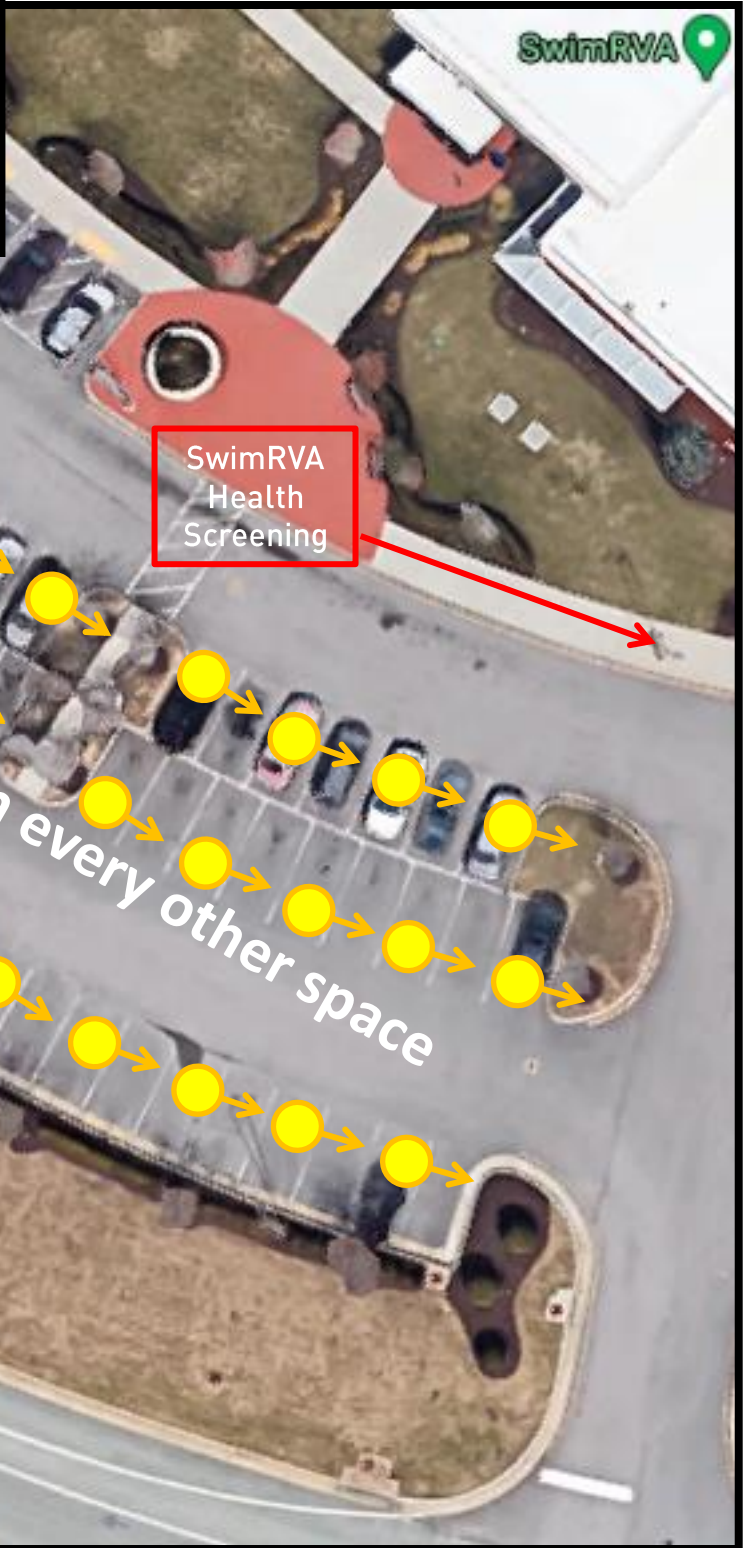
Reminder to park in every other space



SwimRVA Rapids Swim Series Finale

November 20th – 22nd, 2020

Parking/Outdoor Seating Map





SAFER AT HOME: PHASE THREE GUIDELINES FOR ALL BUSINESS SECTORS

PHYSICAL DISTANCING BEST PRACTICES:

- ✓ Establish policies and practices for maintaining appropriate physical distance between persons not living in the same household. Maintain at least ten feet of distance for establishments where exercise activities, singing, or cheering is performed, and at least six feet of distance for all other settings. (See sector-specific guidelines below for more detailed information on public engagement.)
- ✓ Provide clear communication and signage for physical distancing in areas where individuals may congregate, especially at entrances, in seating areas, and in check-out lines.
- ✓ Limit the occupancy of physical spaces to ensure that adequate physical distancing may be maintained. (See sector-specific guidelines for more detailed information.)
- ✓ Encourage telework whenever possible.
- ✓ For those businesses where telework is not feasible, temporarily move or stagger workstations to ensure six feet of separation between co-workers and between members of the public.
- ✓ Limit in-person work-related gatherings, including conferences, trade shows, and trainings.
- ✓ When in-person meetings need to occur, keep meetings as short as possible, limit the number of employees in attendance, and use physical distancing practices.

ENHANCED CLEANING AND DISINFECTION BEST PRACTICES:

- ✓ Practice routine cleaning and disinfection of high contact areas and hard surfaces, including check out stations and payment pads, store entrance push/pull pads, door knobs/handles, dining tables/chairs, light switches, handrails, restrooms, floors, and equipment. Follow [CDC Reopening Guidance for Cleaning and Disinfection](#) and use an [EPA-approved disinfectant](#) to clean. For high contact areas, routinely disinfect surfaces at least every 2 hours. Certain surfaces and objects in public spaces, such as shopping carts and point of sale keypads, should be cleaned and disinfected before each use.
- ✓ To the extent tools or equipment must be shared, provide access to and instruct workers to use an [EPA-approved disinfectant](#) to clean items before and after use.
- ✓ Provide a place for employees and customers to wash hands with soap and water, or provide alcohol-based hand sanitizers containing at least 60% alcohol. (See sector-specific guidelines for more detailed information.)
- ✓ When developing staff schedules, implement additional short breaks to increase the frequency with which staff can wash hands with soap and water. Alternatively, consider providing alcohol-based hand sanitizers with at least 60% alcohol so that workers can frequently sanitize their hands.
- ✓ Provide best hygiene practices to employees on a regular basis, including washing hands often with soap and water for at least 20 seconds and practicing respiratory etiquette protocols. A CDC training video is available here: <https://www.cdc.gov/handwashing/videos.html>.

ENHANCED WORKPLACE SAFETY BEST PRACTICES:

- ✓ Prior to a shift and on days employees are scheduled to work, employers should screen employees prior to starting work. Employees should also self-monitor their symptoms by self-taking of temperature to check for fever and utilizing the questions provided in the [VDH Interim Guidance for COVID-19 Daily Screening of Employees](#) before reporting to work. For employers with established occupational health programs, employers can consider measuring temperature and assessing symptoms of employees prior to starting work/before each shift. CDC considers a person to have a fever when he or she has a measured temperature of 100.4° F (38° C) or greater, feels warm to the touch, or gives a history of feeling feverish.

- ✓ Implement practices such as those described in [VDH Interim Guidance for COVID - 19 Daily Screening of Employees](#) for examples of a screening questionnaire. A sample symptom monitoring log is available in this Interim Guidance.
- ✓ Instruct employees who are sick to stay at home and not report to work. If an employee becomes ill or presents signs of illness, follow [CDC What to Do if You Are Sick guidance](#). Employers should post signage in the common languages of the employees telling employees not to come to work when sick.
- ✓ Develop or adopt flexible sick leave policies to ensure that sick employees do not report to work. Policies should allow employees to stay home if they are sick with COVID-19, if they need to self-quarantine due to exposure, and if they need to care for a sick family member. Employers should recommend that employees follow [CDC guidance on If You Are Sick or Caring For Someone](#).
- ✓ Some employees are at [higher risk for severe illness](#) from COVID-19. These vulnerable employees include individuals over age 65 and those with underlying medical conditions. Vulnerable employees should be encouraged to self-identify and employers should take particular care to reduce their risk of exposure, while making sure to be compliant with relevant Americans with Disabilities Act (ADA) and Age Discrimination in Employment Act (ADEA) regulations.
 1. Consider offering vulnerable employees duties that minimize their contact with customers and other employees (e.g., restocking shelves rather than working as a cashier), if agreed to by the employee.
 2. Protect employees at [higher risk for severe illness](#) by supporting and encouraging options to telework.
 3. If implementing health checks, conduct them safely and respectfully, and in accordance with any applicable privacy laws and regulations. Confidentiality should be respected.
 4. Other information on civil rights protections for workers related to COVID-19 is available [here](#).
- ✓ Designate a staff person to be responsible for responding to COVID-19 concerns. Employees should know who this person is and how to contact them.

- ✓ Implement staggered shifts for both work periods and break periods. Consider cohort scheduling where groups of employees only work with employees in their group.
- ✓ Limit the number of employees in break rooms and stagger breaks to discourage gatherings.
- ✓ Use messaging boards or digital messaging for pre-shift meeting information.
- ✓ If the building has not been occupied for the last seven days, there are additional public health considerations that should be considered, such as taking measures to ensure the [safety of your building water system](#). However, it is not necessary to clean ventilation systems other than routine maintenance as part of reducing the risk of coronavirus transmission.
- ✓ Establish a relationship with your local health department and know who to contact for questions.

For healthcare facilities, additional guidance is provided on [CDC's Guidelines for Environmental Infection Control in Health-Care Facilities](#).

RESOURCES TO PRINT AND DISPLAY:

[CDC Symptoms English](#)

[Spanish CDC Symptoms](#)

[CDC Printable Flyer English](#)

[CDC Printable Flyer Spanish](#)

[CDC Printable Flyer Chinese](#)

[CDC Printable Flyer Korean](#)

[CDC Printable Flyer Vietnamese](#)

[FDA information](#)

[What Grocery Store and Food Retail Workers Need to Know about COVID-19](#)

[CDC Re-Opening America Cleaning and Disinfecting Public Spaces, Workplaces, Businesses, Schools, and Homes](#)

[CDC What You Need to Know About Handwashing VIDEO](#)

SAFER AT HOME: PHASE THREE
SWIMMING POOLS

SCOPE: Indoor and outdoor swimming pools.

PHASE 3: Establishments must either implement the following mandatory requirements or remain closed.

MANDATORY REQUIREMENTS:

Businesses must strictly adhere to the physical distancing guidelines, enhanced cleaning and disinfection practices, and enhanced workplace safety practices provided in the “Guidelines for All Business Sectors” document. If businesses choose to open, they must adhere to the following additional requirements for outdoor operations:

- ✓ Post signage at the entrance that states that no one with a fever or symptoms of COVID-19, or known exposure to a COVID-19 case in the prior 14 days, is permitted in the establishment.
- ✓ Post signage to provide public health reminders regarding physical distancing, gatherings, options for [high-risk individuals](#), and staying home if sick (samples at bottom of this document).
- ✓ Hot tubs, spas, saunas, splash pads, spray pools, and interactive play features must be closed.
- ✓ Indoor and outdoor swimming pools may be open at up to 75% occupancy, if applicable, provided ten feet of physical distance may be maintained between patrons not of the same household. Free swim is allowed.
- ✓ Swimming instruction and water exercise classes must be limited to allow all participants to maintain ten feet of physical distance where practicable. Parents or guardians may support a participant during class, and instructors may have contact with swimmers when necessary.
- ✓ Seating may be provided on pool decks with at least ten feet of spacing between persons who are not members of the same household.

- ✓ All seating (including lifeguard stations) must be cleaned and disinfected between uses.
- ✓ Employees working in customer-facing areas are required to wear face coverings over their nose and mouth, such as using [CDC Use of Cloth Face Coverings guidance](#). Lifeguards responding to distressed swimmers are exempt from this requirement.
- ✓ Provide hand sanitizing stations, including at the entrance/exit and where shared equipment is utilized.
- ✓ Facilities should screen patrons for COVID-19 symptoms prior to admission to the facility. Patrons should be asked if they are currently experiencing fever (100.4 degrees Fahrenheit or higher) or a sense of having a fever, a new cough that cannot be attributed to another health condition, new shortness of breath that cannot be attributed to another health condition, new chills that cannot be attributed to another health condition, a new sore throat that cannot be attributed to another health condition, or new muscle aches that cannot be attributed to another health condition or specific activity (such as physical exercise). Children should be screened per the CDC guidance for screening children. Anyone experiencing symptoms should not be permitted in the facility. Screenings should be conducted in accordance with applicable privacy and confidentiality laws and regulations.

RESOURCES TO PRINT AND DISPLAY:

[CDC Symptoms English](#)

[Spanish CDC Symptoms](#)

[CDC Printable Flyer English](#)

[CDC Printable Flyer Spanish](#)

[CDC Printable Flyer Chinese](#)

[CDC Printable Flyer Korean](#)

[CDC Printable Flyer Vietnamese](#)

[FDA information](#)

SAFER AT HOME: PHASE THREE

RECREATIONAL SPORTS

SCOPE: Indoor and outdoor recreational sports activities

PHASE 3: Recreational sports activities must either implement the following mandatory requirements or must not take place.

MANDATORY REQUIREMENTS:

Participants and organizers of recreational sports activities must strictly adhere to the physical distancing guidelines, enhanced cleaning and disinfection practices, and enhanced workplace safety practices provided in the “Guidelines for All Business Sectors” document. Participants and organizers of recreational sports activities must adhere to the following additional requirements for such activities:

- ✓ Post signage at the entrance that states that no one with a fever or symptoms of COVID-19, or known exposure to a COVID-19 case in the prior 14 days, is permitted in the establishment.
- ✓ Post signage to provide public health reminders regarding physical distancing, gatherings, options for [high-risk individuals](#), and staying home if sick (samples at bottom of this document).
- ✓ Indoor and outdoor recreational sports should maintain ten feet of physical distance between all instructors, participants, and spectators, where practicable.
- ✓ The total number of attendees (including both participants and spectators) of recreational sports cannot exceed the lesser of 50% of the occupancy load on the certificate of occupancy, if applicable, or 250 persons. For sports played on a field, attendees are limited to 250 persons per field.
- ✓ Ensure anyone who has symptoms of, has tested positive for, or has been exposed to COVID-19 follows appropriate guidelines for quarantine or isolation. Persons with symptoms should stay home until CDC criteria for ending isolation have been met. Persons with severe symptoms may need to be evaluated by a healthcare provider. Establish procedures for safely transporting anyone who is sick to their home or to a healthcare facility. If you are calling an ambulance or bringing someone to the hospital, try to call first to alert them that the person may have COVID-19.

- ✓ Conduct daily screening of coaches, officials, staff, and players for COVID-19 symptoms prior to admission to the venue/facility. Children should be screened per the CDC guidance for screening children. Adults should be asked if they are currently experiencing fever (100.4 degrees Fahrenheit or higher) or a sense of having a fever, a new cough that cannot be attributed to another health condition, new shortness of breath that cannot be attributed to another health condition, new chills that cannot be attributed to another health condition, a new sore throat that cannot be attributed to another health condition, or new muscle aches that cannot be attributed to another health condition or specific activity (such as physical exercise). Anyone experiencing symptoms should not be permitted in the venue/establishment. Screenings should be conducted in accordance with applicable privacy and confidentiality laws and regulations.
- ✓ All shared items must be disinfected between each use to the extent practicable.

RESOURCES TO PRINT AND DISPLAY:

[CDC Symptoms English](#)

[Spanish CDC Symptoms](#)

[CDC Printable Flyer English](#)

[CDC Printable Flyer Spanish](#)

[CDC Printable Flyer Chinese](#)

[CDC Printable Flyer Korean](#)

[CDC Printable Flyer Vietnamese](#)

[FDA information](#)